

# ENVIRONMENTAL MANAGEMENT – WATER CONSERVATION



IHEA PD SEMINAR

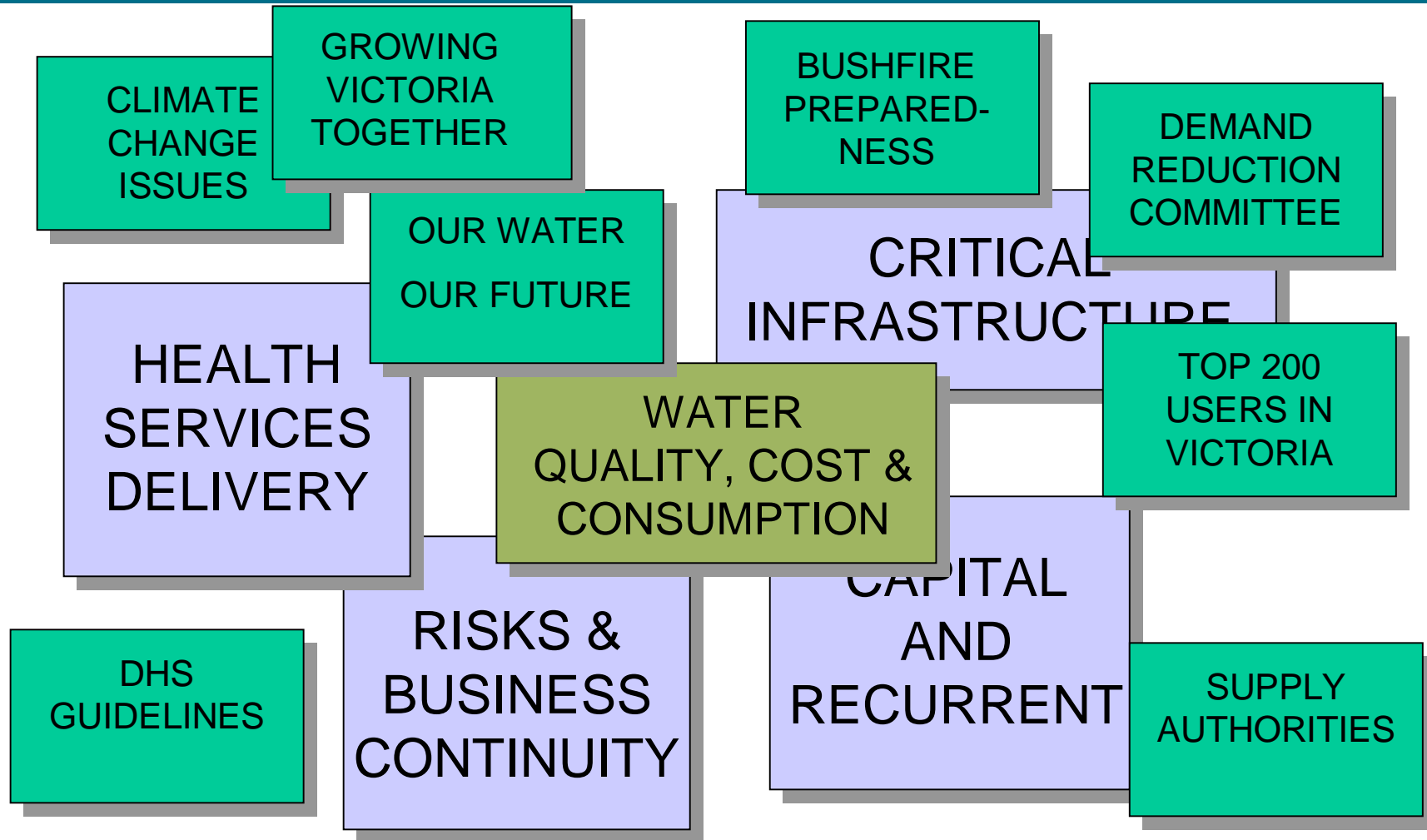
BEN GELNAY  
23 FEBRUARY 2007

# ON HOSPITAL RADAR

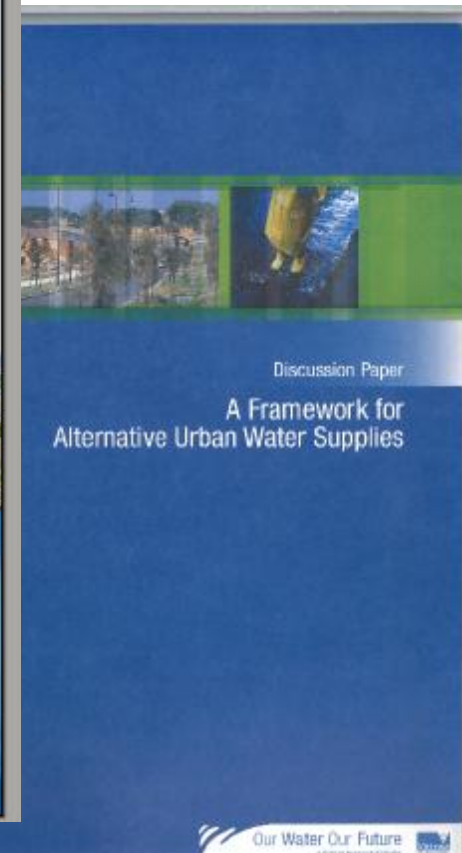
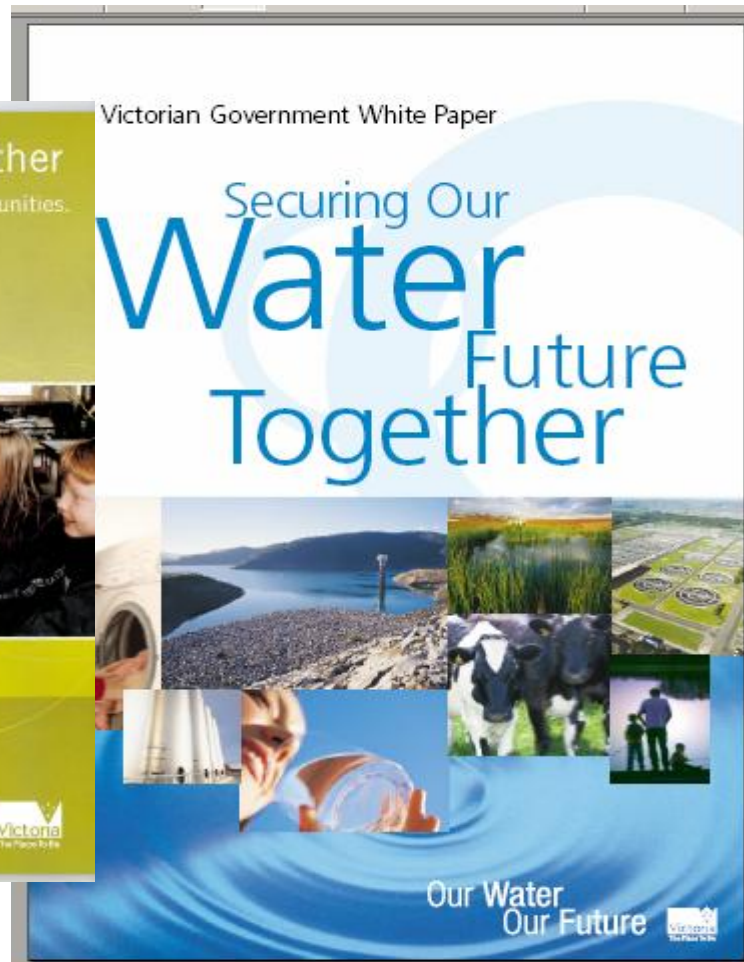
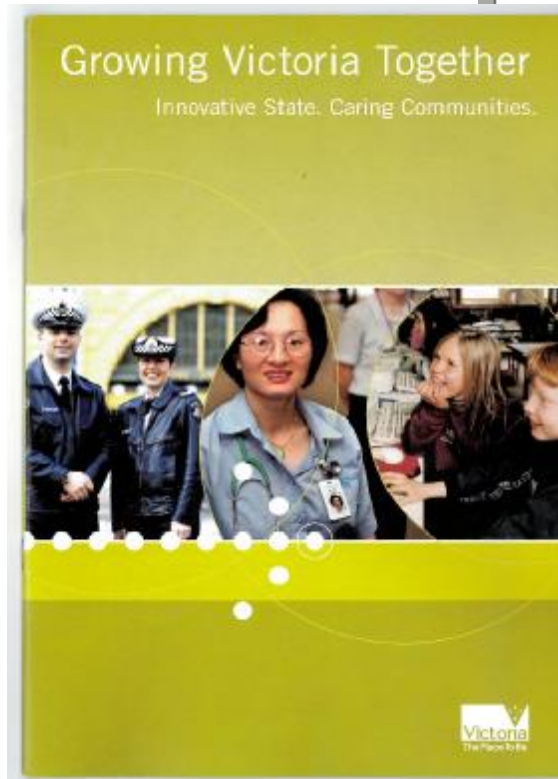
## WATER IN THE:

- HOSPITAL ESD POLICY
- RISK REGISTER
- BUSINESS CONTINUITY / CONTINGENCY PLAN
- PURCHASING POLICY

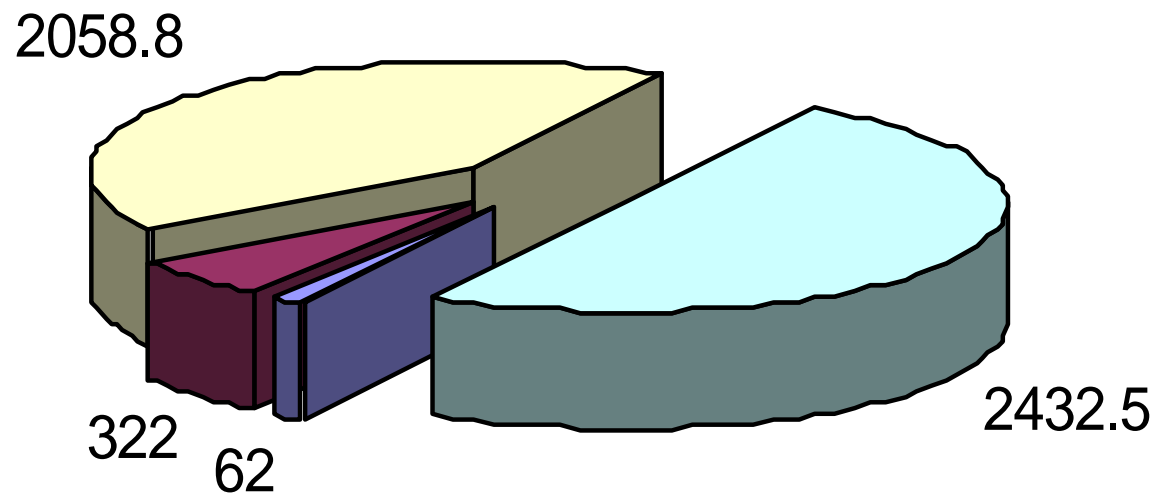
# WATER-IN' OUR HOSPITALS



# VICTORIAN POLICY



# WATER CONSUMPTION BY HOSPITALS



■ < 5ml ■ 5 to 20 ml ■ 20 to 150 ml ■ >150ml

# WATER CONSUMPTION

DO YOU KNOW IN TERMS OF:

- **MANAGEMENT INTEREST**
  - LITRES PER SEPARATION
  - LITRES PER BED DAY
  
- **BENCHMARKING**
  - MONITOR
  - TRENDS

# DHS POLICY

Environment Policy  
Department of Human Services

did you  
make a difference  
today?

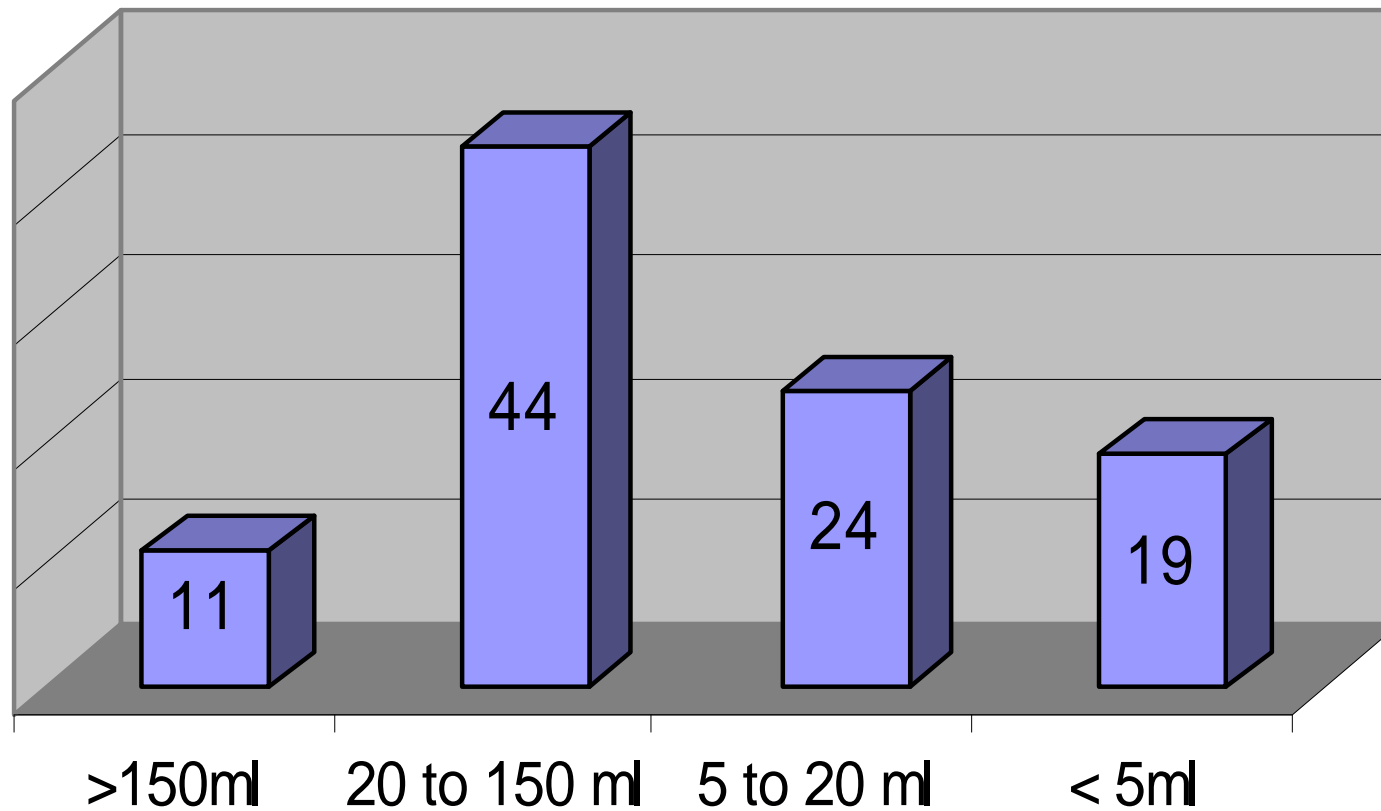
healthy environment • healthy places • healthy communities

Victoria  
The Place To Be

Your private drinking water supply

Victoria  
The Place To Be

# HOSPITALS BY CONSUMPTION





# IS WATER QUALITY AN ISSUE

## 9 Rainwater

**Takeaway**  
Water collected directly from roof can off

**3.1 Context**  
Rainwater is the source of water for most rural dwellers who are not provided with a centralized water supply. The roof water can be collected, stored, and used for drinking and other purposes including irrigation, washing, and other uses. In the absence of other water supply, rainwater is the only source of water available to the rural dwellers. With the advent of more developed areas, the water can be collected for drinking of use. However, rainwater is not pure water. It is contaminated by the rain and the water in the air. It is also contaminated by the dust and the debris that fall on the roof. It is also contaminated by the water that is collected from the roof of the adjacent building.

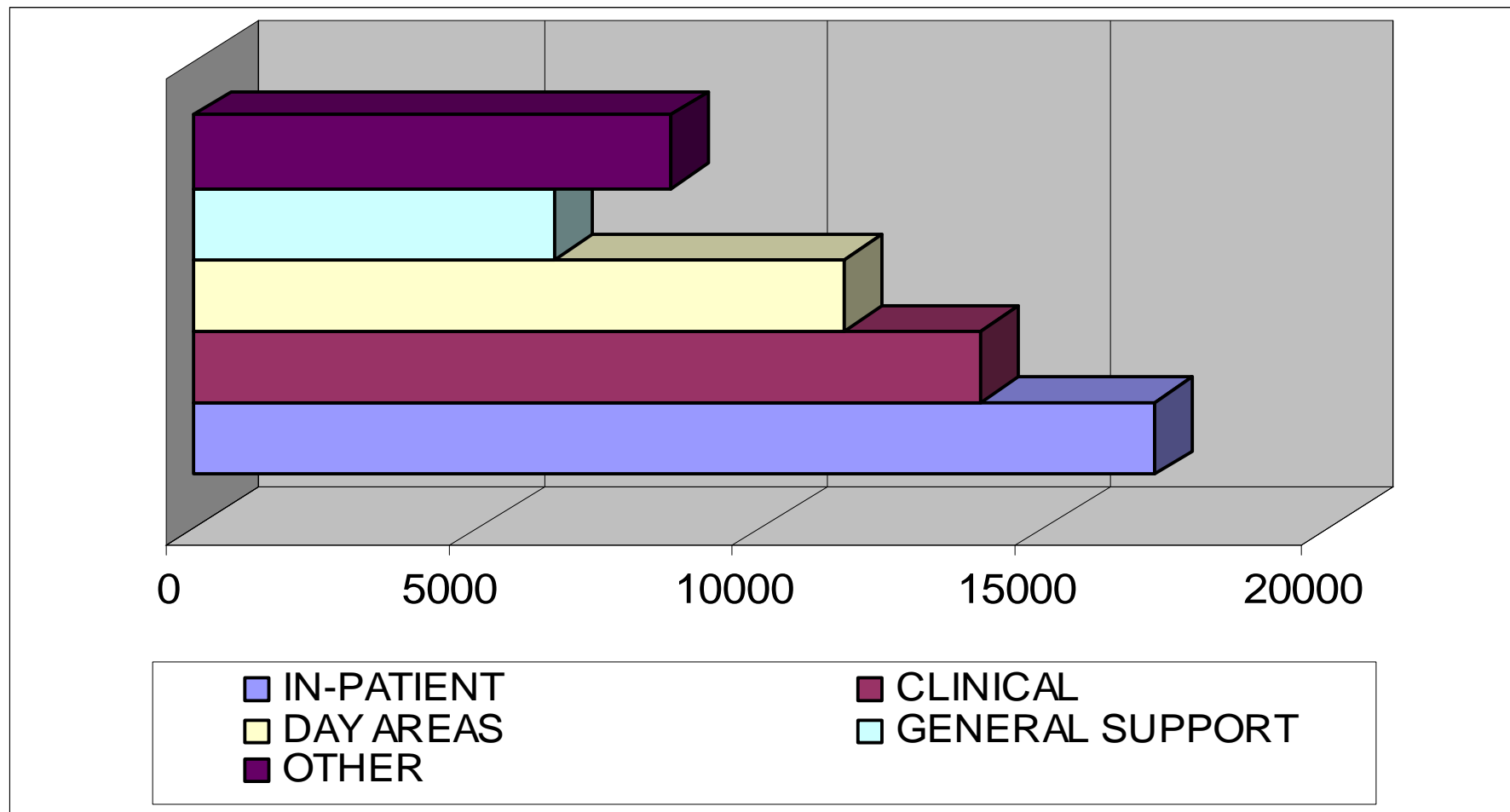
**3.2 Rainwater Single Site Risks and Recommendations**  
For a single site, the primary risk is the contamination of the water supply. This is due to the fact that the water is collected from the roof and is not treated. A Risk-based Approach for water supply can be used to assess the risk. The Risk-based Approach for water supply is a tool that can be used to assess the risk of water supply. It is based on the concept of risk, which is the product of the probability of an event occurring and the consequences of that event. The Risk-based Approach for water supply can be used to assess the risk of water supply. It is based on the concept of risk, which is the product of the probability of an event occurring and the consequences of that event.

**Rainwater – Single Site**

Use	Risk Rating	Recommended Approach	Treatment	Management Controls			
				Sanitary & Design	Site Assessment	Monitoring	Operation
Drinking	L	None	None	Sanitary & Design	Site Assessment	Monitoring	Operation
Food Preparation	L	None	None				
Personal Hygiene	L	None	None	Sanitary & Design	Site Assessment	Monitoring	Operation
Laundry	L	None	None				
Other uses (e.g. irrigation)	L	None	None	Sanitary & Design	Site Assessment	Monitoring	Operation
Other uses (e.g. irrigation)	L	None	None				
Other uses (e.g. irrigation)	L	None	None	Sanitary & Design	Site Assessment	Monitoring	Operation
Other uses (e.g. irrigation)	L	None	None				
Other uses (e.g. irrigation)	L	None	None	Sanitary & Design	Site Assessment	Monitoring	Operation
Other uses (e.g. irrigation)	L	None	None				
Other uses (e.g. irrigation)	L	None	None	Sanitary & Design	Site Assessment	Monitoring	Operation
Other uses (e.g. irrigation)	L	None	None				

Notes: 1. The risk rating is based on the Risk-based Approach for water supply. 2. The recommended approach is based on the Risk-based Approach for water supply. 3. The management controls are based on the Risk-based Approach for water supply.

# HOW LONG CAN HOSPITAL SURVIVE

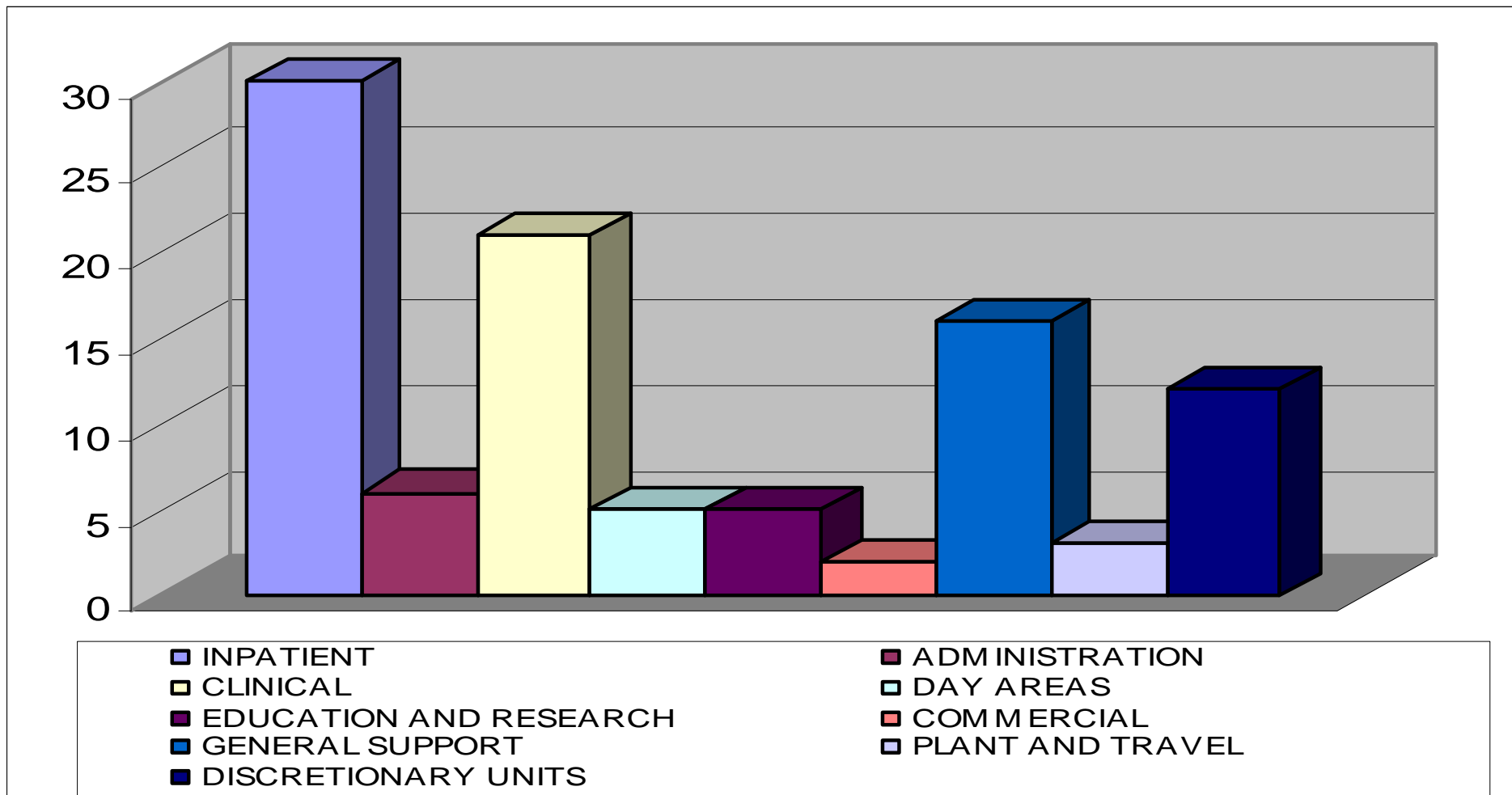


# REDUCING WATER CONSUMPTION

## TARGET AREAS:

- AVOIDANCE AND CONSERVATION
- RECYCLING AND REUSE
- SUBSTITUTION
- EFFICIENCY

# DESIGNS for less WATER



# CHALLENGES

- LACK OF KNOWLEDGE
  - MAJOR USES
  - VALUE ADD
- BOARD BUY-IN
- FUNDS FOR INFRASTRUCTURE
- THAT'S WHY YOU ARE HERE TODAY
  - OTHER SPEAKERS WILL DESCRIBE TOOLS, CASE STUDIES AND SUPPORTING MATERIAL / CASE STUDIES