



IHEA Professional Development November 2009

Castlemaine Health
Asset Management
Case study
Roderick Woodford

Assets What are They

Facilities.

Human Resources.



 castlemaine
HEALTH

MT ALEXANDER HOSPITAL
• Acute
• Rehabilitation
• Residential Care
• Accident & Emergency
Admissions
• Visitors Car Park
• All Bays, Outpatients
• Specialist Consulting Rooms
• Short Term Parking

10
No Parking

Electronic Data and Control Management Systems.

The first question you should ask is, what will EDCMS do for you, and what do you want or expect out of it?

The most direct answer to this question is, that you want a EDCMS to make your life easier.

For example:

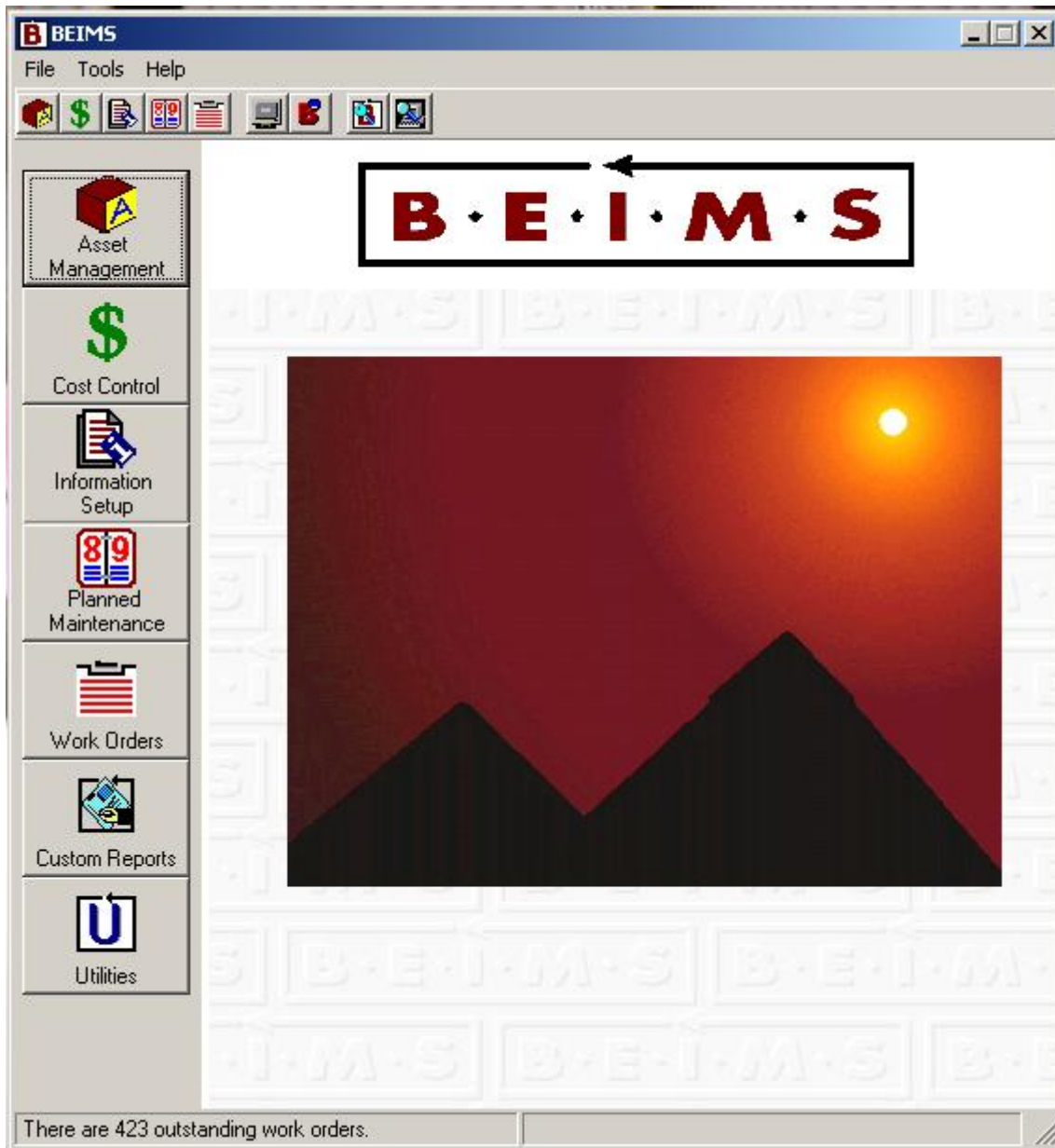
- Reduce engineering costs
- Improve availability of plant
- Reduce breakdowns
- Improved safety
- Higher level of customer service.

Facilities

- Electronic Data Management Systems.
- Must be intuitive in design and practical in application.
- Be flexible in interrogation of information.
- Current and reliable information.

Building Automation System

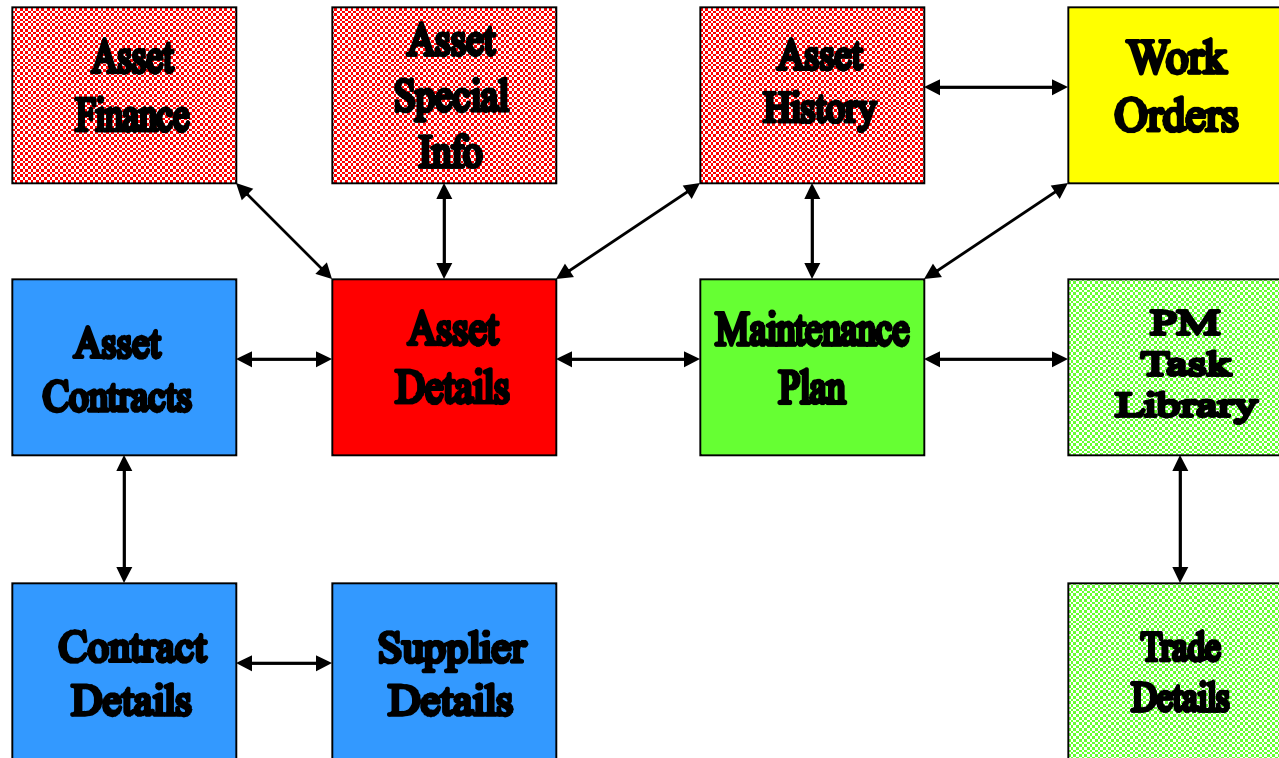
- The BAS monitors and controls the A/C.
- Is accessible from the Engineering office.
- Reduces nuisance call-outs for staff.
- Staff time can be spent on more productive activities.
- Allows for economy and special circumstance control.



BEIMS Menu Screen

BEIMS

Building Engineering Information Management System

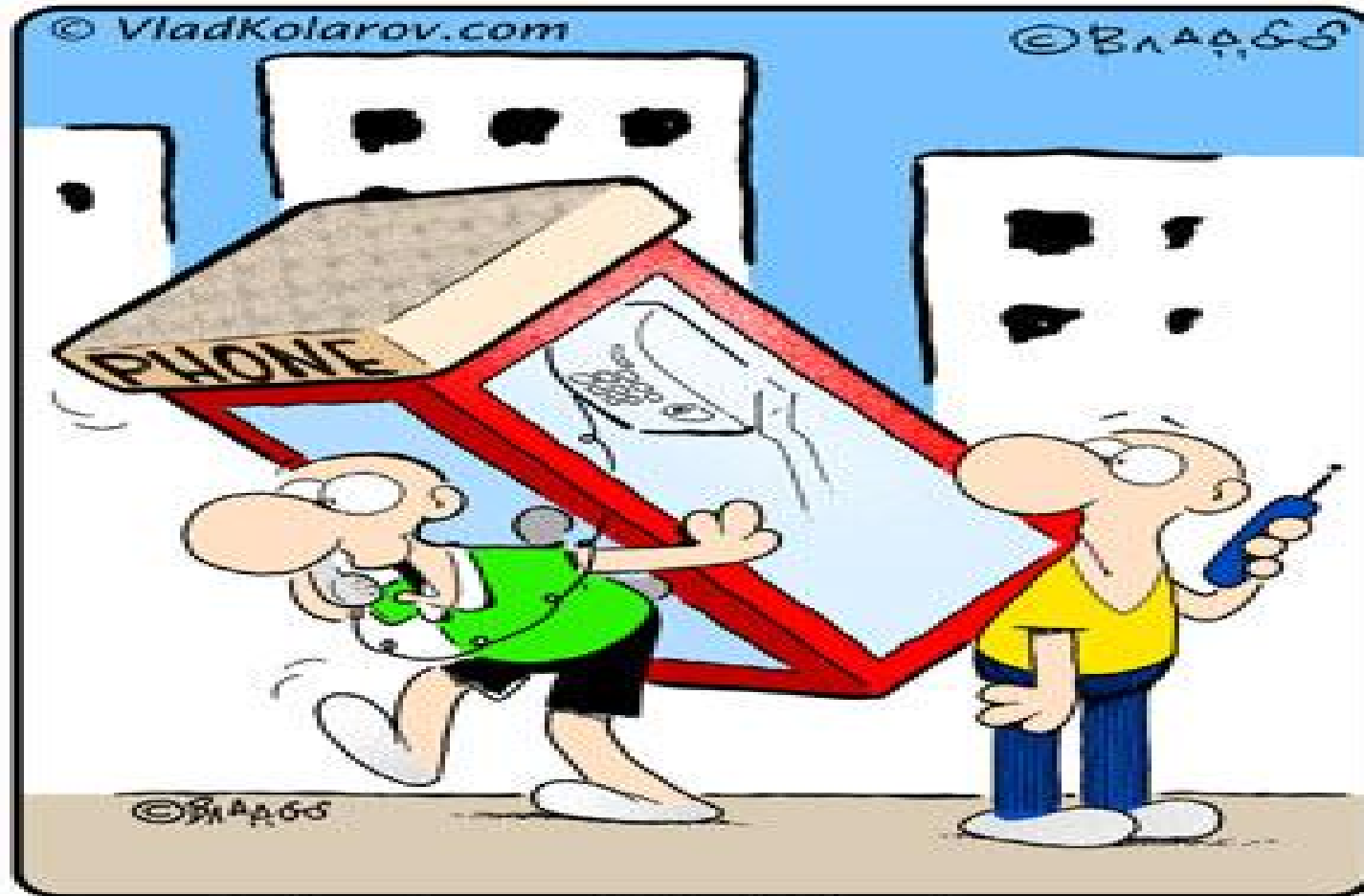




Human Resources

- Our Engineering department consists of three office personal.
- Eight trade staff
- With a combined service of 160 years and an average age of over 50.
- Within ten years 3 to 4 will retire.
- Within twenty years 10 will retire.

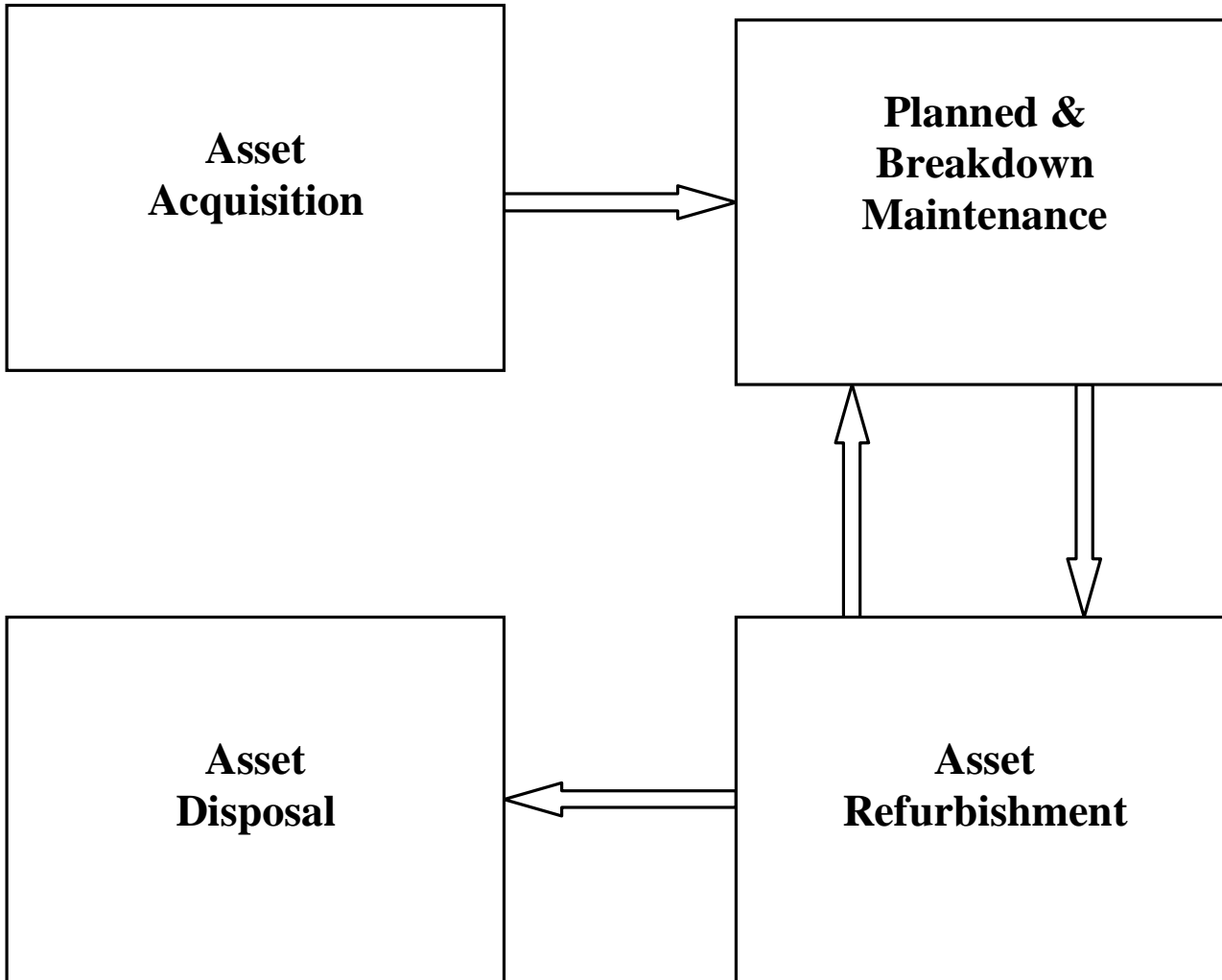
From Baby Boomer to X and Y Generation



The Age of Mobile Phones

BEIMS

Building & Engineering Information Management System



Contractors

- Most monthly Essential Services work is completed by in house staff.
- Annual inspections of Essential Services is completed by qualified contractors.
- Service contract for fire panel, air-conditioning, medical equipment, window cleaning, BEIMS and other specialist trades.

Key Performance Indicators

Month	July	August	September	October
High Priority Comp /2 Days	85.53%	82.5%	88.61%	81.5%
Medium Priority Comp / 7 Days	78.66%	85.40%	93.28%	99%
Low Priority Comp /30 Days	100%	99.2%	100%	100%
Total # outstanding	818	686	688	641
Total working hours for trade staff.	1656	1344	1408	1344
Non productive hour/ month	260	285	383	419
BEIMS recorded hours / month	1206	1004	977	810

Any Questions

