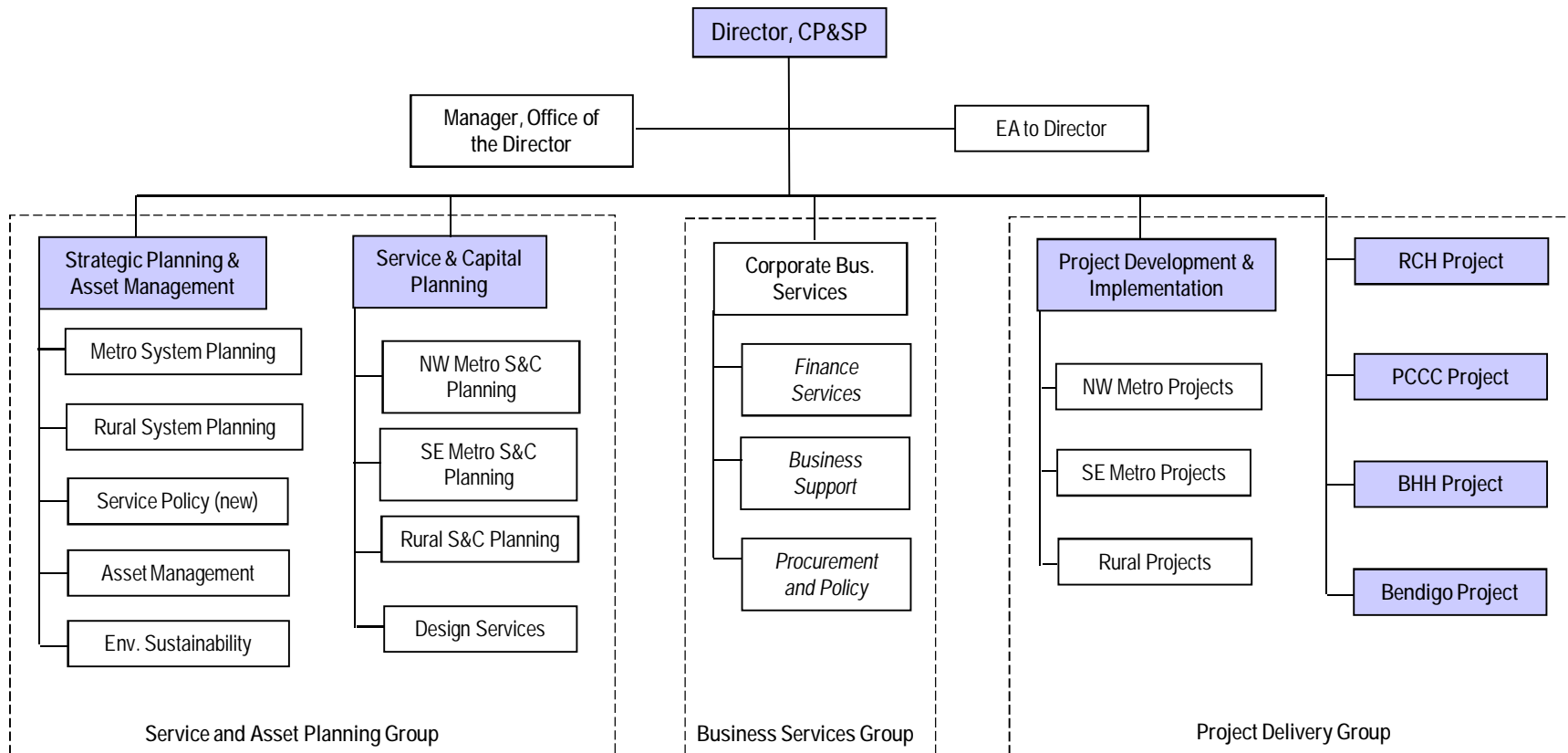


# Sustainability in health care

Sue Brennan

Manager Strategic Planning & Asset Management

# Who leads on environmental sustainability?



## Purpose

### Capital Projects & Service Planning role:

- leading environmental sustainability in the health sector

### Capital Projects & Service Planning strategic priority to:

- drive environmental sustainability objectives through design, performance monitoring and supporting behavioural change in the health sector

## Achievements

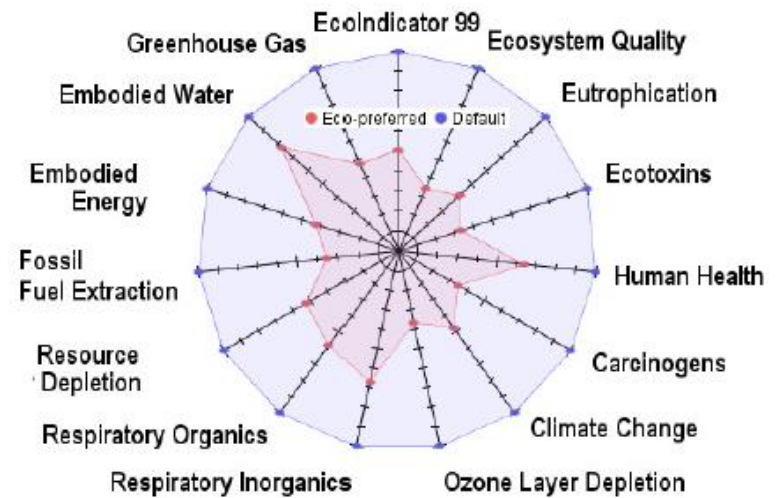
Guidelines for sustainability in health care capital works

Alexandra District Hospital Longitudinal Study

ResourceSmart Healthcare

Sustainable health care procurement

# Sustainability in health care capital works



# Alexandra Hospital longitudinal study

Two-year study looking at:

- Staff productivity
- Patient outcomes
- Environmental impact

Comparing existing hospital to new hospital being built next door

Interim results late 2011 / early 2012



# ResourceSmart Healthcare

Provides assistance to develop environmental management plans

Over 80 health organisations participated so far

20 health services prepared EMPs

Final phase commencing March 2011



ResourceSmart Healthcare Draft Strategy

South West Healthcare November 2010

Kooweerup  
Regional Health Service  
ResourceSmart Healthcare Strategy 2010 - 2011  
From 2010 - June 2011

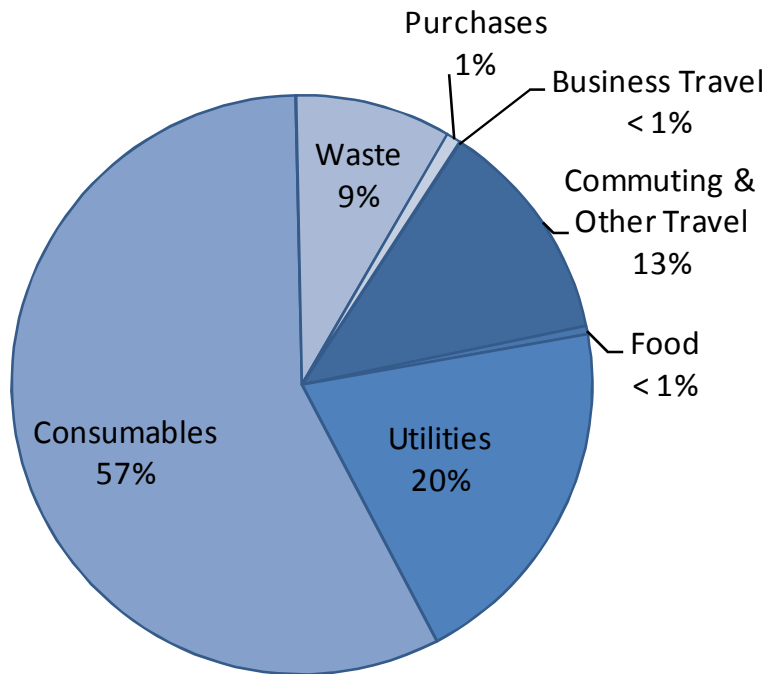
Northern Health  
Environmental Management Strategy  
July 2010 - June 2011  
Northern Health

easternhealth  
GREAT HEALTH AND WELLBEING  
resourceSmart  
Environment and Sustainability Action Plan 2010

Department of Health

# Sustainable health care procurement

Figure 1: Carbon Footprint





# Challenges in delivering sustainable outcomes

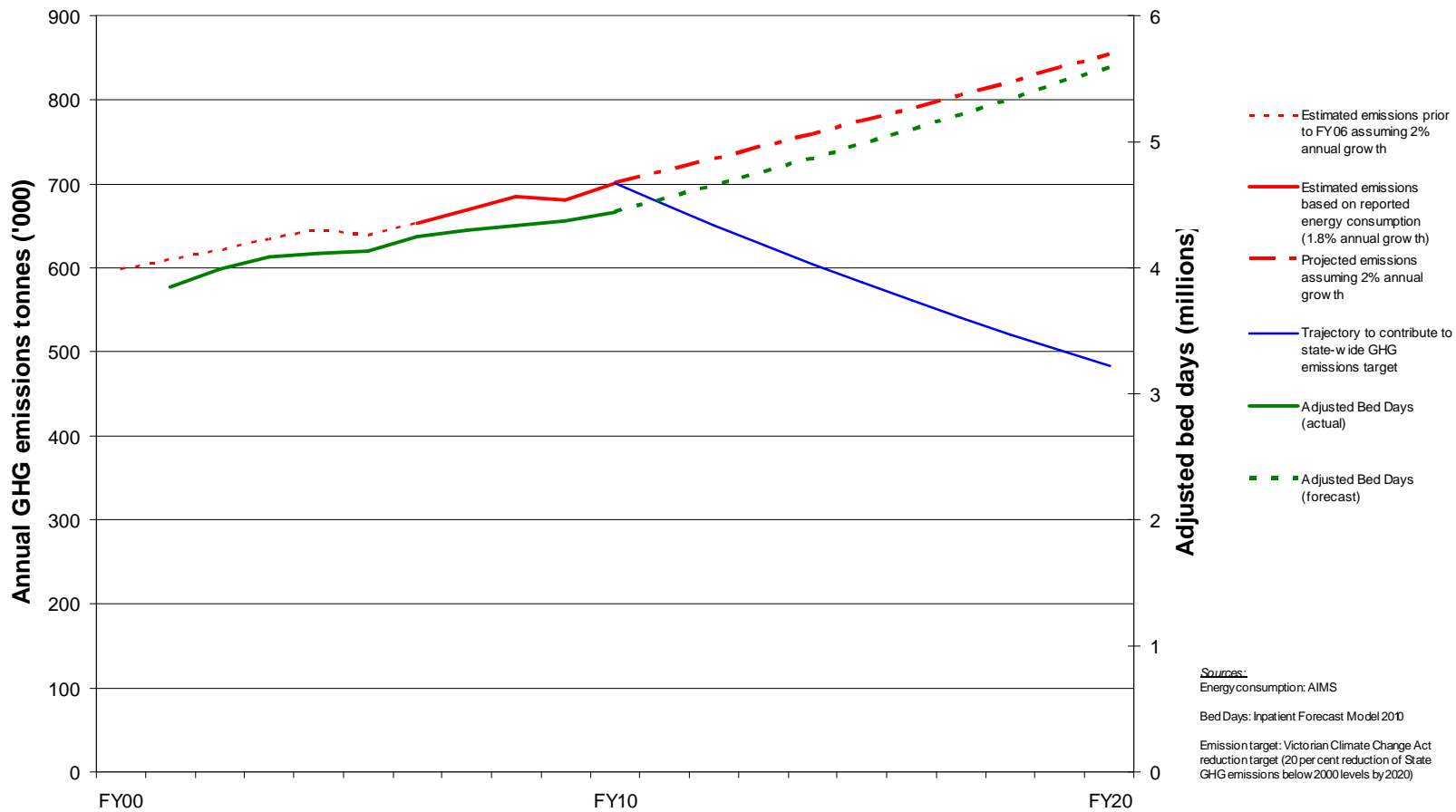
Growth in demand for health services & carbon emissions

Infrastructure & responding to extreme events

Operating in an environment of uncertainty

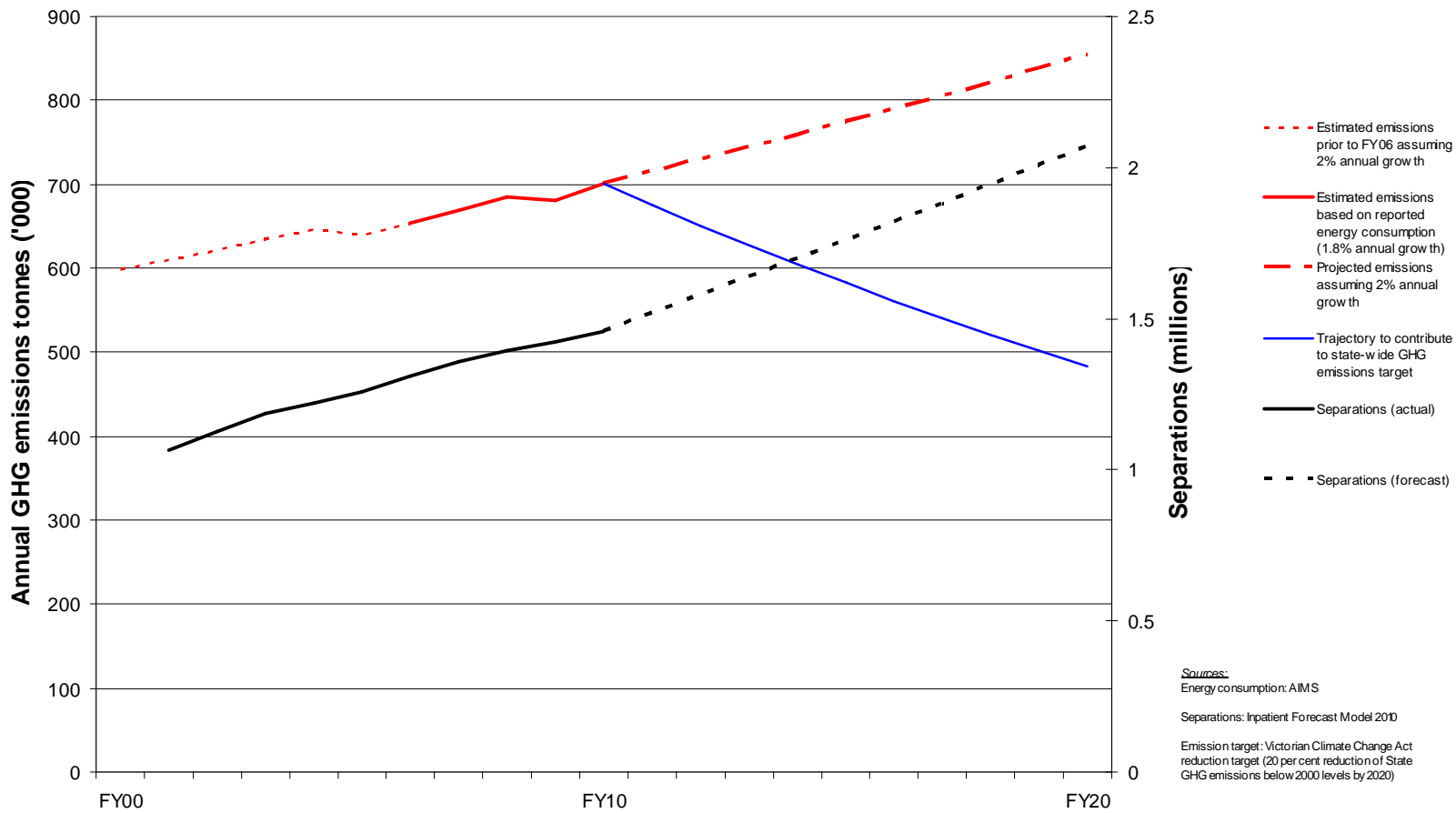
# Carbon emissions & bed days

**Victorian public health GHG (greenhouse gas) emissions from stationary energy consumption mapped against adjusted bed days**



# Carbon emissions & separations

Victorian public health GHG (greenhouse gas) emissions from stationary energy consumption mapped against separations



## Responding to extreme events

- Integration of bushfire risk into GIS
- Summer Preparedness Self Assessment Tool
- Bushfire Attack Level assessments
- Rectification works and maintenance items addressing:
  - Fuel reduction and management
  - Smoke protection
  - Ember protection
- Acceptance of the VFRR (Wildfire) Extreme category

## Environment of uncertainty

### Operating environment:

- Existing funded programs completed
- Further direction on environmental will emerge during the term of the Government

### Energy performance contracting

- Proceeding across government
- DH working with Austin Health
- DH working through risks, including latent conditions

# Opportunities

health

Learning from other health services

Working together on common projects

Working with other government stakeholders

Thank You!

Sue Brennan

Manager Strategic Planning & Asset Management

[sue.brennan@health.vic.gov.au](mailto:sue.brennan@health.vic.gov.au)

(03) 9096 2119